

Test Case-47

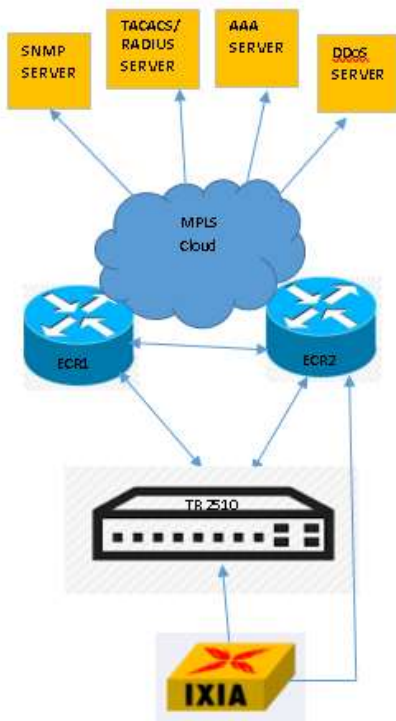
Test Name: RJIL-IP-QA-DS-SYS-048

Test Objective: The demarc should be able to offer the ability to limit data flows based on MAC source/destination address, IP source/destination address, TCP/UDP port numbers, or any combination of these fields.

Test Configuration:

```
ipv6 access-list 1
permit tcp 100::1/128 eq 1000 200::1/128 eq 2000 sequence 10
deny tcp any any sequence 20
!
interface GigaEthernet0/1
ipv6 access-group 1
!
```

Test Set up (Including Pre requisites): Switch ,ECR1,ECR2,IXIA



Procedure: Connect switch to ECR1,ECR2,IXIA

Action: Configure the access list, and applied to the G0 / 1 on the switch port connected to IXIA .

Response: On the other port of switch, only the TCP packets with the source address of 100::1 and the source port number of 1000 are 200::1 destination port number 2000 , but no other packets are received.

1

1

Expected Result: Switch limits the data flows based on MAC source/destination address, IP source/destination address, TCP/UDP port numbers, or any combination

Actual Result:

The screenshot shows the InNetwork traffic tool interface. The top menu includes File, Home, Automation, Results / Reports, Views, and Configuration. The main window displays a traffic configuration table with columns for Transmit State, Traffic Item Name, Enabled, Flow Groups, Tx Ports, Rx Ports, and Endpoint/Encapsulation Sets. Below the table, there are tabs for Summary, Settings, Tracking and Latency, and All. The Flow Statistics tab is active, showing a table with columns for Tx Port, Rx Port, Traffic Item, TCP-TCP-Source-Port, TCP-TCP-Dest-Port, Source/Dest Endpoint Pair, UDP-UDP-Source-Port, UDP-UDP-Dest-Port, Loss %, Tx Rate (Mbps), Rx Rate (Mbps), Tx Frames, and Rx Frames. The table shows three rows of traffic statistics for tcp1, tcp2, and udp.

Tx Port	Rx Port	Traffic Item	TCP-TCP-Source-Port	TCP-TCP-Dest-Port	Source/Dest Endpoint Pair	UDP-UDP-Source-Port	UDP-UDP-Dest-Port	Loss %	Tx Rate (Mbps)	Rx Rate (Mbps)	Tx Frames	Rx Frames	
1	To CPE LAN	To ECR	tcp1	100	1,000	82.82.82.1-82.82.82.2			18.937	299.994	0.000	31,996,498	25,937,481
2	To CPE LAN	To ECR	tcp2	200	2,000	82.82.82.1-82.82.82.2			11.248	200.004	200.004	21,331,001	18,931,706
3	To CPE LAN	To ECR	udp			82.82.82.1-82.82.82.2	500	5,000	7.689	49.998	0.000	5,332,750	4,922,741

GUICHECK#show run int gi0/3

Building configuration...

Current configuration:

```
!  
interface GigaEthernet0/3  
  switchport trunk vlan-allowed 333-335,885  
  switchport mode trunk  
  ip access-group test3  
GUICHECK#  
  
ip access-list extended test3  
  permit udp any any eq 5000  
  deny  udp any any  
!  
ip access-list extended test3  
  permit tcp any eq 200 any  
!  
interface GigaEthernet0/3  
  switchport trunk vlan-allowed 333-335,885  
  switchport mode trunk  
  ip access-group test3  
!
```